

MANUAL

MOUNTING – DISMOUNTING

ASSEMBLING – DISASSEMBLING
INSTRUCTION

TECHNICAL
INFORMATION

ET-GR-S
ET-AC-S



DSI SERVICE – TEAM

Sales Department DSI Hamm

Sabine Groneberg
DSI Hamm Germany, Austria, Switzerland
Phone: +49 (0) 23 85 772 212
E-Mail: groneberg@dsi-group.net

Sandra Leszynsky
Western Europe and UK, USA, Australia, Asia
Phone: +49 (0) 23 85 772 214
E-Mail: leszynsky@dsi-group.net

Katrin Poth
France, Spain, Portugal
Phone: +49 (0) 23 85 772 215
E-Mail: poth@dsi-group.net

Iryna Matyak
Eastern Europe
Phone: +49 (0) 23 85 772 216
E-Mail: matyak@dsi-group.net

Sales Department DSI International

CL2
Joost Samyn
Sales Representative
Western Europe
Molenbergstraat 15
1700 Dilbeek
Belgium
Phone: +32 24 52 70 55
Mobil: +32 49 134 39 00
E-Mail: samyn@dsi-group.net

DSI UK
Jeff Garrity
Service Centre
c/o Pegler Yorkshire
ST Catherine's Avenue
Doncaster, South Yorkshire
DN4 8DF
United Kingdom
Phone: +44 13 02 560 190
Mobil: +44 78 02 346 664
E-Mail: garrity@dsi-group.net

Keg Service
Tadeusz Gonciarczyk
Sales Representative
Eastern Europe
UL. Walowa 3
51-523 Wroclaw
Poland
Phone: +48 71 34 66 632
Mobil: +48 50 51 54 152
E-Mail: biuro@keg-service.pl

OJA
Olaf Jakob
Sales Representative
Germany, Austria, Switzerland
Wortmannsweg 14
44149 Dortmund
Germany
Phone: +49 (0) 231 22 50 740
Fax: +49 (0) 231 22 50 741
E-Mail: o.j.a@t-online.de

QUALITY AND SAFETY



Dear customer,

please study this manual thoroughly. Incorrect assembly or disassembly may damage the fitting and can cause harm to product or person.

Specialised sealing systems made of high-grade materials are in daily utilisation with all our types of extractor tubes. Due to continuous improvement of our technology we are able to equip all A-type and G-type systems with a two-year warranty.

LIST OF CONTENTS

1. Mounting Instruction
2. Dismounting Instruction
3. Disassembling Instruction
4. Assembling Instruction
5. Tool List
6. Technical Information
7. Connections

MOUNTING INSTRUCTION

EXTRACTOR TUBE ET-AC-S / ET-GR-S

1. Mounting Instruction

ET-AC-S



ET-GR-S



MOUNTING INSTRUCTION

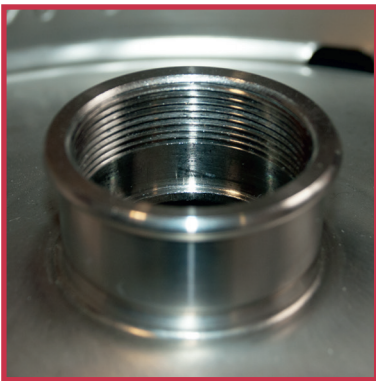
EXTRACTOR TUBE ET-AC-S / ET-GR-S

Fig. 01



1. Moisten the extractor tube with water.

Fig. 02



2. Check the keg neck is clean. Clean the keg neck from any contaminations.

Fig. 03



3. Check the sealing ring is not damaged and is positioned correctly.

MOUNTING INSTRUCTION

EXTRACTOR TUBE ET-AC-S / ET-GR-S

Fig. 04



4. Check if lock/safety is O.K. Insert the Extractor Tube straight.

Fig. 05



5. Push the Extractor Tube in the Keg by hand.

Fig. 06



6. Tighten the extractor tube (rotate it clockwise) with the DSI screw-in/screw-out tool. The mounting torque (continuous) must be 80 ± 5 Nm.

MOUNTING INSTRUCTION

EXTRACTOR TUBE ET-AC-S / ET-GR-S

Fig. 07



7. Remove the screw-in/screw-out tool. The keg is ready for use now.

DISMOUNTING INSTRUCTION

EXTRACTOR TUBE ET-AC-S / ET-GR-S

2. Dismounting Instruction

ET-AC-S



ET-GR-S



DISMOUNTING INSTRUCTION

EXTRACTOR TUBE ET-AC-S / ET-GR-S

Fig. 08



1. Decompress the keg e. g. by means of the DSI decompression tool.

Fig. 09



2. Unscrew the extractor tube (rotate it counter-clockwise) with the DSI screw-in/screw-out tool.

tool AC: 550426.8
tool GR: 550425.7

Fig. 10



3. Click the tool on the extractor tube by pushing it onto the rubber valve.

ATTENTION PLEASE: Do not press the handles!

tool: 028248.0

DISMOUNTING INSTRUCTION

EXTRACTOR TUBE ET-AC-S / ET-GR-S

Fig. 11



4. Lift the tool with the locked extractor tube a little bit and rotate it clockwise to unlock the bayonet-plate while holding the body.

Fig. 12



5. Push the tool down with one hand while holding the flange with the other hand.

Fig. 13



6. Tool is down on flange.

DISMOUNTING INSTRUCTION

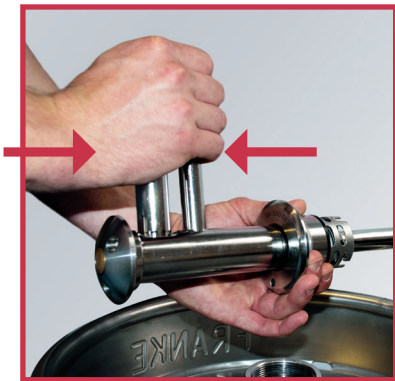
EXTRACTOR TUBE ET-AC-S / ET-GR-S

Fig. 14



4. Lift the spear body upwards at the tool. Now the extractor tube can be taken out of the keg neck.

Fig. 15



5. Press the handles together to release the tool. The body is separated from the down tube. To complete disassembling go to page 14/15 and follow the instructions.

DISASSEMBLING INSTRUCTION

EXTRACTOR TUBE ET-AC-S / ET-GR-S

3. Disassembling instruction

ET-AC-S



ET-GR-S



DISASSEMBLING INSTRUCTION

EXTRACTOR TUBE ET-AC-S / ET-GR-S

Fig. 16



1. Push down and hold the (de-) mounting haft with the two pins in the holes to relax the spring.

part number: 550431.2

Fig. 17



2. Take out the safety latch by pulling it down.

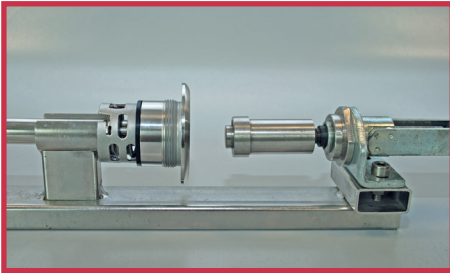
Fig. 18



3. Take of the (de-) mounting tool.

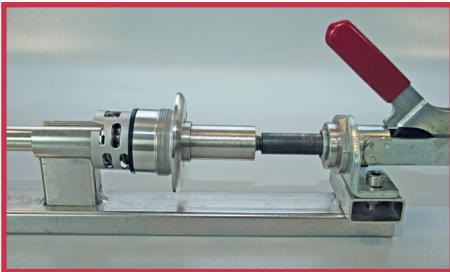
DISASSEMBLING INSTRUCTION

EXTRACTOR TUBE ET-AC-S / ET-GR-S

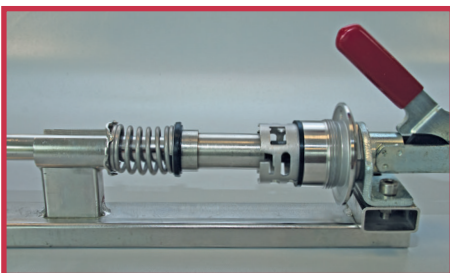


1. Push the handle of the DSI Tool backward. Place the extractor tube in the tool.

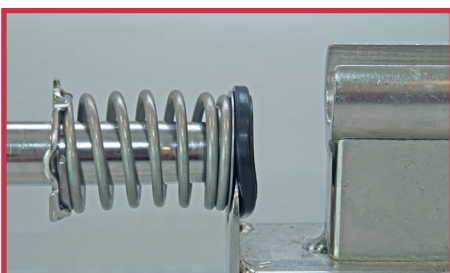
tool: 5500429.0



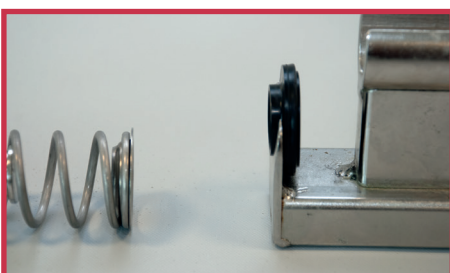
2. Push the handle forward to relax the spring.



3. Turn the body counter-clockwise and move it onto the ringnut. Push the handle backward to take the tube and the body out of the tool.



4. Remove the valve by pushing the fork (at the end of the tool) between the valve and the metal part and pulling it away from the tool.



5. Take off the remaining parts. The extractor tube is disassembled.

ASSEMBLING INSTRUCTION

EXTRACTOR TUBE ET-AC-S / ET-GR-S

4. Assembling instruction

ET-AC-S

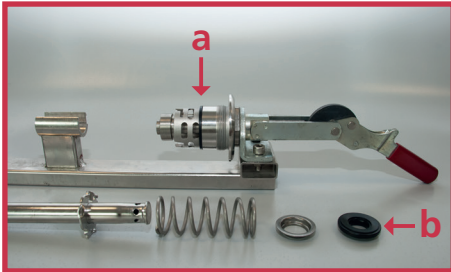


ET-GR-S



ASSEMBLING INSTRUCTION

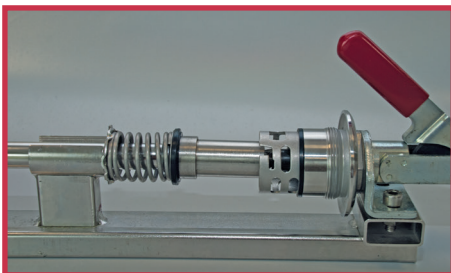
EXTRACTOR TUBE ET-AC-S / ET-GR-S



1. Replace the sealing ring on the body (a) and the main seal (b). Put the body onto the ringnut and keep all the parts ready. Before assembling, moisten the rubber parts with Water.



2. Place all the pieces in the correct sequence on the tube. Put the extractor tube in the tool.



3. Centre the spring between the guides on the locking plate. Mount the valve on the tube by pushing the handle forward.



4. Move the body to the locking plate and turn it clockwise after the body is positioned in the lugs. Check if lock/safety is correct and if the countersinking from the safety latch is in the correct position.



5. Push the handle backward in order to tension the spring and take out the extractor tube. Please check the correct position of the seals. Now install the safety latch to complete extractor tube assembling (go to page 18 and follow the instructions).

ASSEMBLING INSTRUCTION

EXTRACTOR TUBE ET-AC-S / ET-GR-S

Fig. 19



1. Push down and hold the (de-) mounting haft with the two pins in the holes to relax the spring.

part number: 550431.2

Fig. 20



2. Positioned the safety latch in the body with the flat side against the tube and the bended side pointing to the top of the body (Fig. 20 circle).

Fig. 21



3. Release (de-) mounting tool to tense the spring. If the spring is not properly positioned, push it by a pin of the tool on the countersinking from the safety latch (Fig. 21 lower arrow).

TOOLS
EXTRACTOR TUBE ET-AC-S / ET-GR-S



5. Tool List

ET-AC-S



ET-GR-S



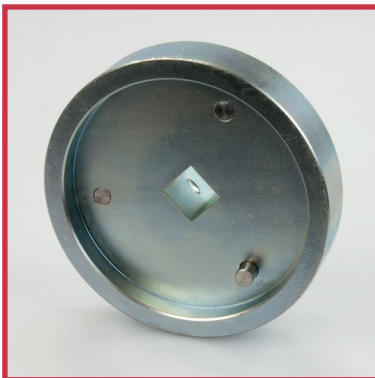
TOOLS

EXTRACTOR TUBE ET-AC-S / ET-GR-S



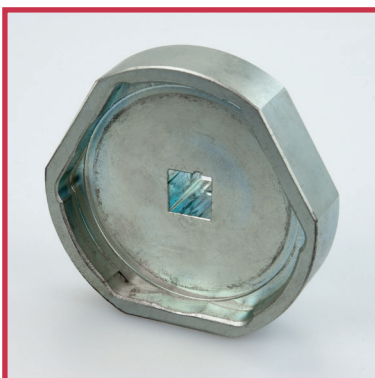
1. Removal tool

part number: 028248.0



2. Screw-in/screw-out tool:

part number: 550426.8



3. Screw-in/screw-out tool:

part number: 550425.7

TOOLS

EXTRACTOR TUBE ET-AC-S / ET-GR-S



4. Assembling/Disassembling tool:

part number: 550429.0



5. Mounting/Demounting haft for the safety latch:

part number: 550431.2

TECHNICAL INFORMATION

EXTRACTOR TUBE ET-AC-S / ET-GR-S

6. Technical Information

ET-AC-S

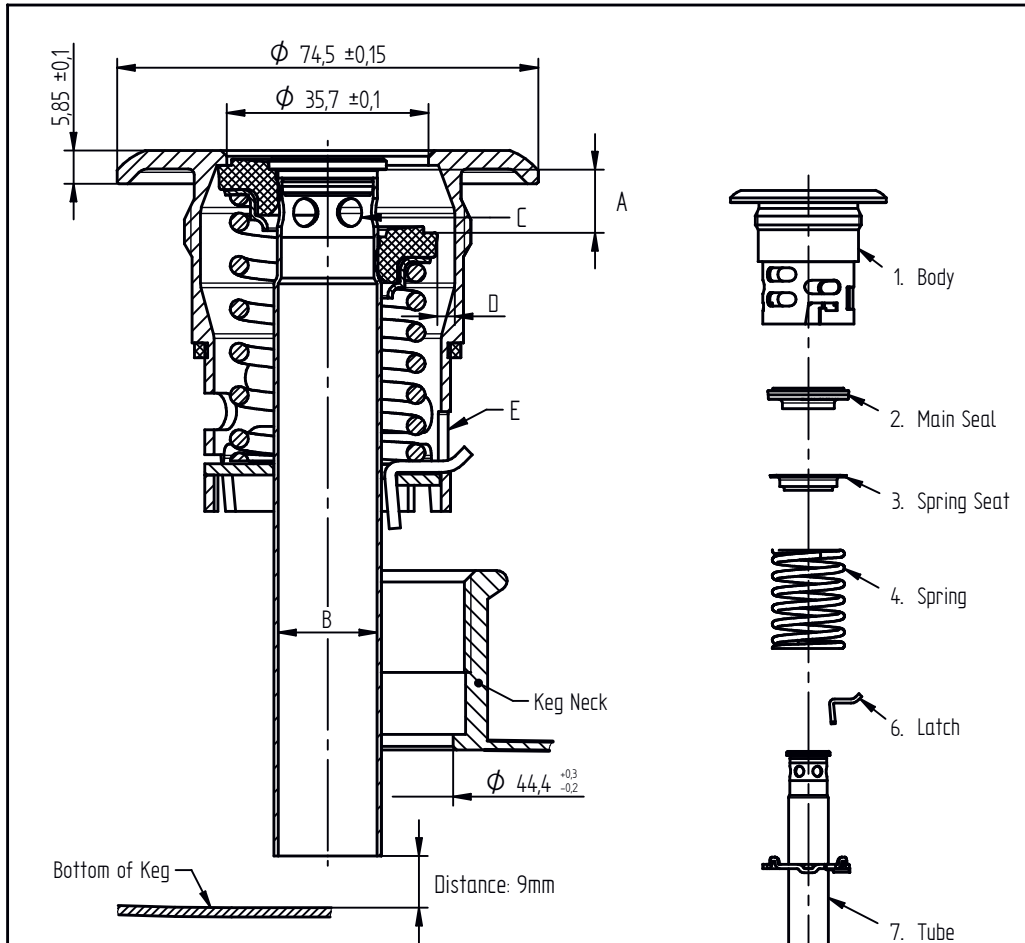


ET-GR-S




TECHNICAL INFORMATION



EXTRACTOR TUBE ET-AC-S



DSI Getriebsanfertigung GmbH.
 If in doubt, please ask.
 Samples are required after each revision.

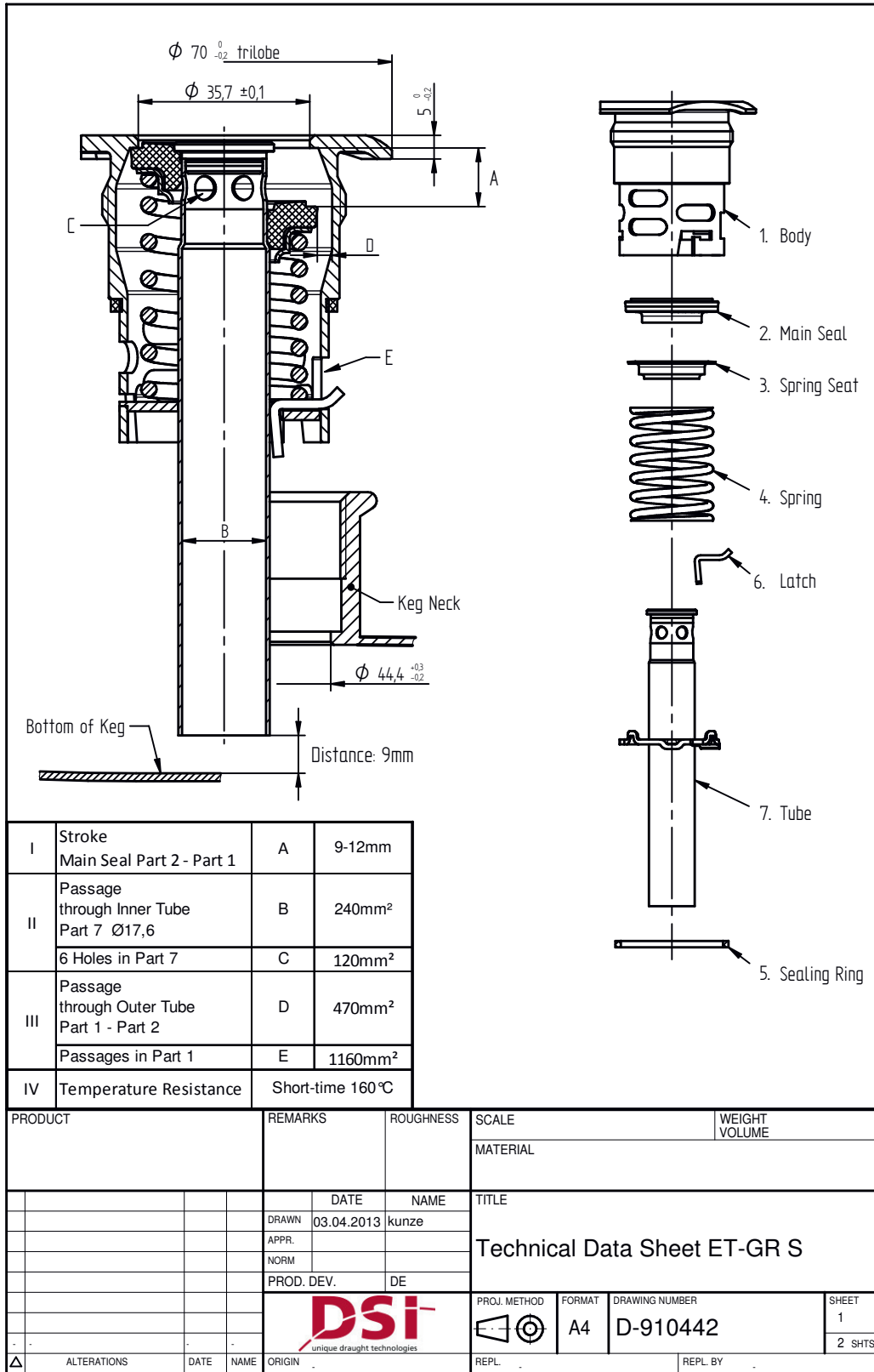
This drawing is the property of Disperse Systems International.
 The information is confidential and should not be copied for
 any other purpose without the prior written permission of

I	Stroke Main Seal Part 2 - Part 1	A	9-12mm
II	Passage through Inner Tube Part 7 Ø17,6	B	240mm ²
	6 Holes in Part 7	C	120mm ²
III	Passage through Outer Tube Part 1 - Part 2	D	470mm ²
	Passages in Part 1	E	980mm ²
IV	Temperature Resistance	Short-time 160 °C 	

PRODUCT		REMARKS	ROUGHNESS	SCALE	WEIGHT VOLUME		
				MATERIAL			
		DATE	NAME	TITLE			
		DRAWN 26.06.2003	AH	Technical Data Sheet ET-AC S			
		APPR.					
		NORM					
		PROD. DEV.	DE				
				PROJ. METHOD	FORMAT	DRAWING NUMBER	SHEET
					A4	D-184934	1
A 160°C was 135°C		18.03.2013	Kunze			2 SHTS.	
ALTERATIONS		DATE	NAME	ORIGIN	REPL.	REPL. BY	

TECHNICAL INFORMATION

EXTRACTOR TUBE ET-GR-S



CONNECTIONS

EXTRACTOR TUBE ET-AC-S / ET-GR-S

6. Connections

ET-AC-S

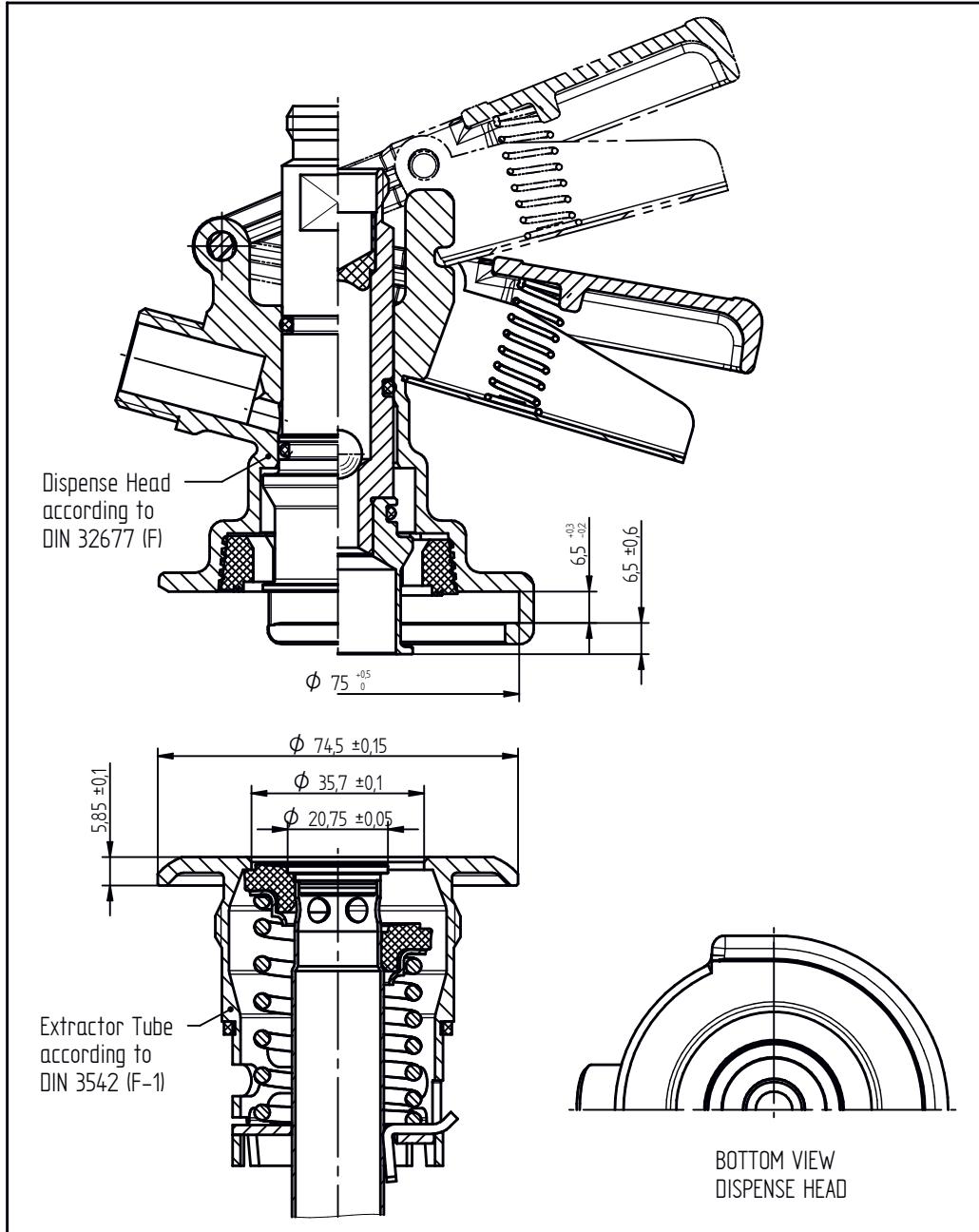


ET-GR-S



CONNECTIONS

EXTRACTOR TUBE ET-AC-S



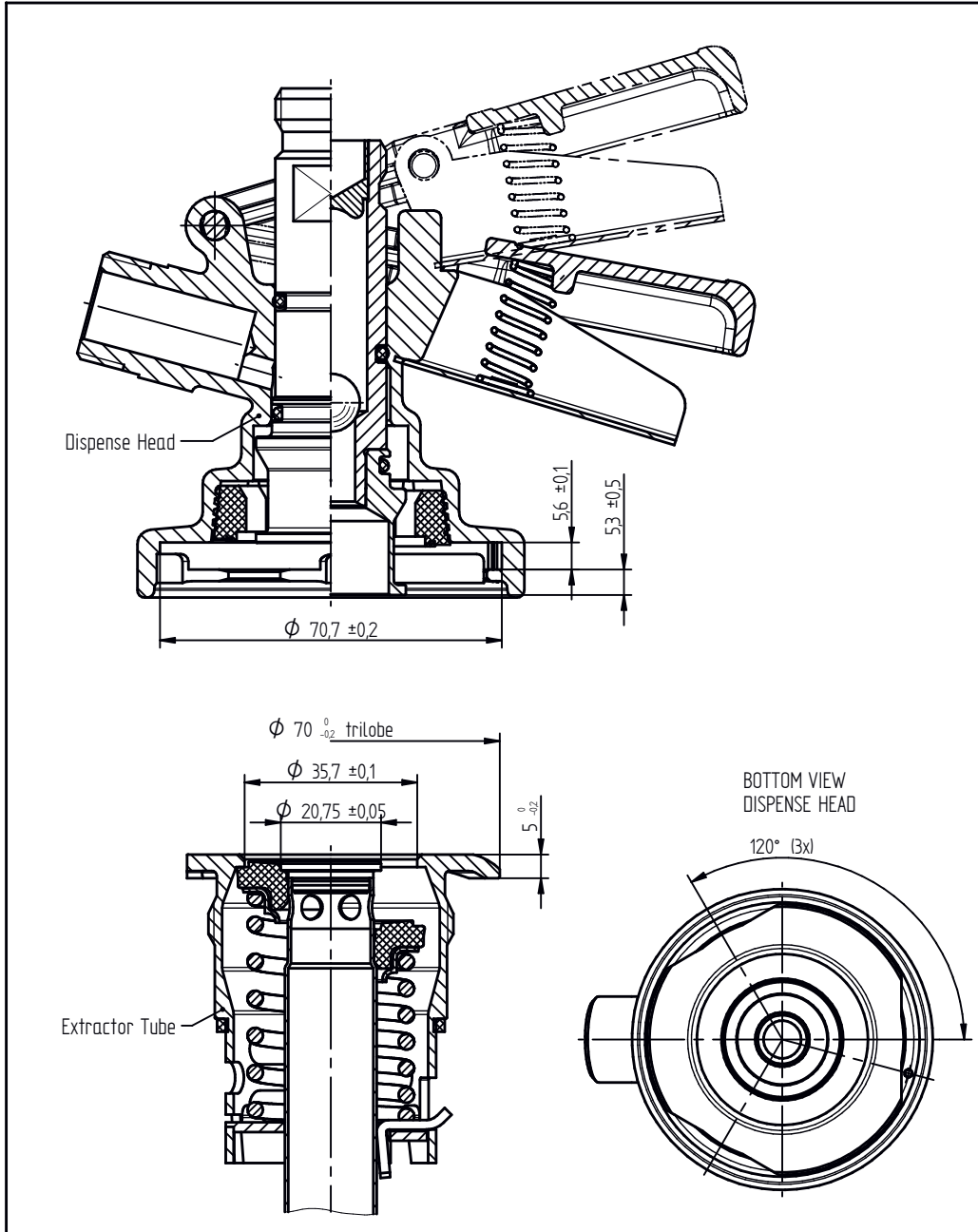
DSI Getränkearmaturen GmbH.
 If in doubt, please ask.
 Samples are required after each revision.

This drawing is the property of Dispense Systems International.
 The information is confidential and should not be copied for
 any other purpose without the prior written permission of

PRODUCT		REMARKS		ROUGHNESS	SCALE	WEIGHT VOLUME	
					MATERIAL		
		DATE	NAME		TITLE		
		DRAWN	04.11.2002	AH	Flat Type Connection System AC S		
		APPR.					
		NORM					
		PROD. DEV.	DE				
				PROJ. METHOD	FORMAT	DRAWING NUMBER	SHEET
A updated				22.03.2013	Kunze		A4
ALTERATIONS		DATE	NAME	ORIGIN	REPL.	REPL. BY	2 SHTS.



CONNECTIONS

EXTRACTOR TUBE ET-GR-S



DSI Getränkeautomaten GmbH.
 If in doubt, please ask.
 Samples are required after each revision.

This drawing is the property of Dispense Systems International.
 The information is confidential and should not be copied for
 any other purpose without the prior written permission of

PRODUCT		REMARKS		ROUGHNESS	SCALE	WEIGHT VOLUME	
					MATERIAL		
		DATE	NAME		TITLE		
		DRAWN	05.11.2002 AH		Flat Type Connection System GR S		
		APPR.					
		NORM					
		PROD. DEV.	DE				
				PROJ. METHOD	FORMAT	DRAWING NUMBER	SHEET
					A4	D-184715	1
A updated	27.03.2013	Kunze					2 SHTS.
ALTERATIONS		DATE	NAME	ORIGIN	REPL.	REPL. BY	



Germany

DSI Getränkearmaturen GmbH
Oberster Kamp 20
59069 Hamm

Phone: +49(0)2385 772 100

Fax: +49(0)2385 772 249

sales@dsi-group.net

www.dispensegroup.com



USA

Taprite
3248 Northwestern Drive
San Antonio, Texas 78238

Phone: +1(210)523 0800

Fax: +1(210)520 3035

sales@taprite.com

www.taprite.com



United Kingdom

DSI Service Centre U.K.
c/o Pegler Yorkshire
ST Catherine's Avenue
Doncaster, South Yorkshire, DN4 8DF

Phone: +44(0)1302 560 190

Fax: +44(0)1302 767 608

sales-uk@dsi-group.net

